

Ferrari



365 GTB 4 DAYTONA BERLINETTA
365 GTC 4 PININFARINA COUPE
246 GT DINO COUPE
246 GTS DINO SPYDER

MARANELLO CONCESSIONAIRES LTD

Ferrari

SOLE CONCESSIONAIRES
GREAT BRITAIN

Tower Service Station
Egham By-pass, Surrey
Telephone: Egham 3966

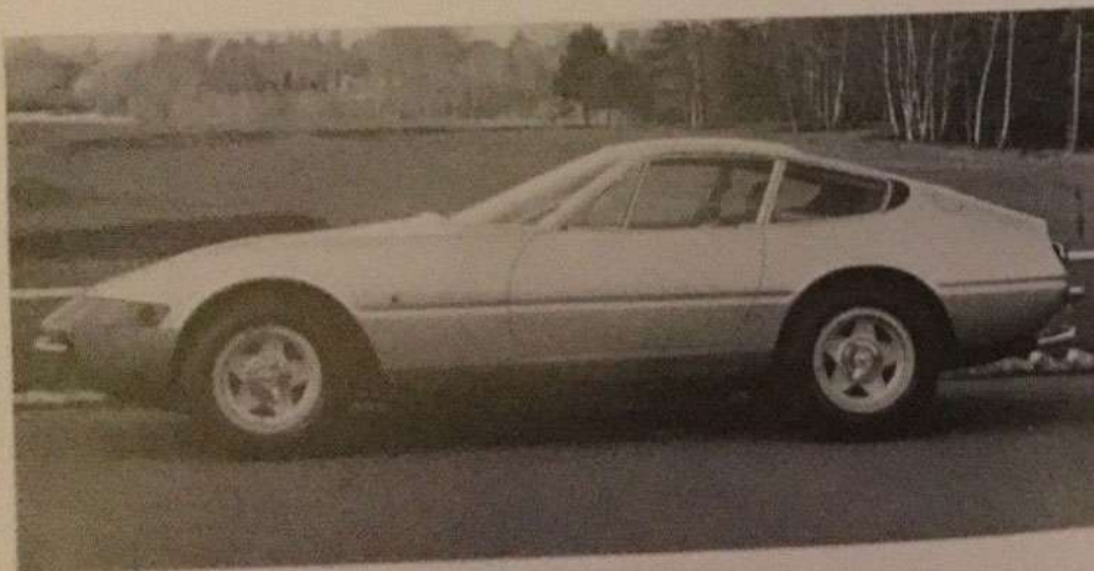
365 GTB 4 DAYTONA BERLINETTA

4.4 Litre V12 4 Overhead camshaft engine
352 b.h.p. at 7.500 r.p.m.

Body designed by: PININFARINA
Built by: SCAGLIETTI

Right or left hand drive
Speed: 180 mph
Length: 14' 6"
Width: 5' 10"
Height: 4' 1"
Wheelbase: 7' 11"
Front track: 4' 8"
Rear track: 4' 9"
Dry weight: 28 cwt.
Capacity of tank: 28 gallons

Basic Price: £7,932
Purchase Tax: £1654.06
Total: £9586.06



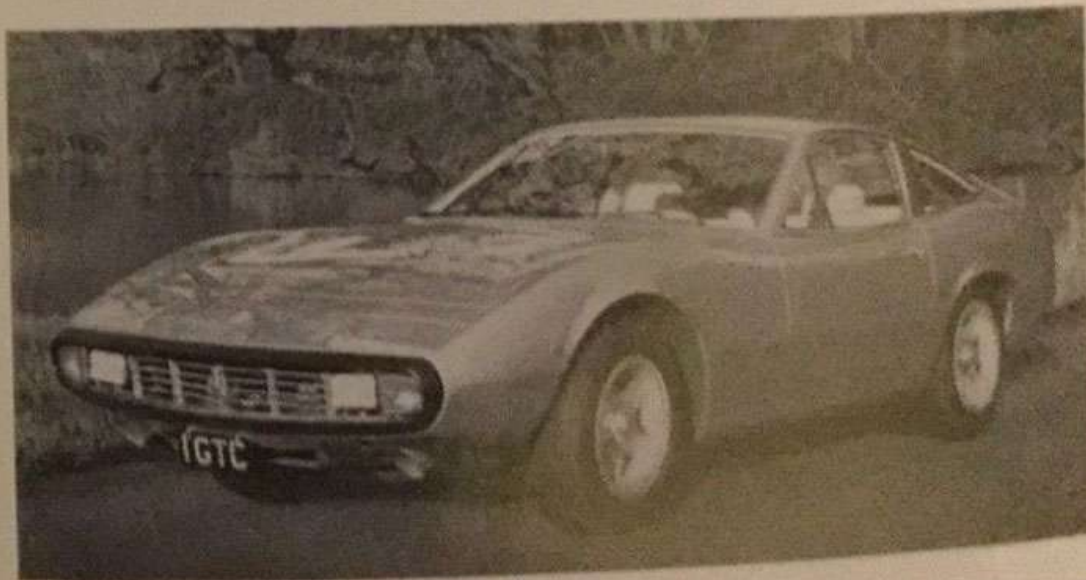
365 GTC 4 PININFARINA COUPE

4.4 Litre V12 4 Overhead camshaft engine
320 b.h.p. at 6,200 r.p.m.

Body designed by: PININFARINA
Built by: PININFARINA

Right or left hand drive
Speed: 160 mph
Length: 14' 11"
Width: 6' 10"
Height: 4' 2"
Wheelbase: 8' 2"
Front track: 4' 10"
Rear track: 4' 10"
Dry weight: 29½ cwt
Capacity of tank: 23 gallons

Basic Price: £7,850
Purchase Tax: £1,635.99
Total: £9,485.99



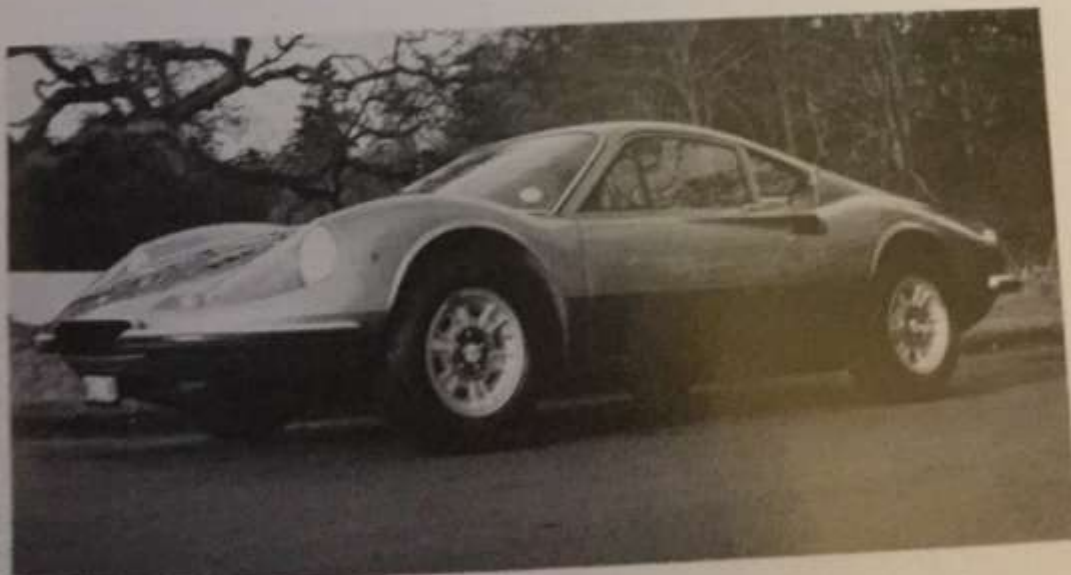
246 GT DINO COUPE

2.4 Litre V6 Overhead camshaft engine
195 b.h.p. at 7,600 r.p.m.

Body designed by: PININFARINA
Built by: SCAGLIETTI

Right or left hand drive
Speed: 150 mph
Length: 13' 10"
Width: 5' 7"
Height: 3' 8"
Wheelbase: 7' 8"
Front track: 4' 8"
Rear track: 4' 8"
Dry weight: 21½ cwt.
Capacity of tank: 14½ gallons

Basic Price: £4,375
Purchase Tax: £913.02
Total: £5,288.02



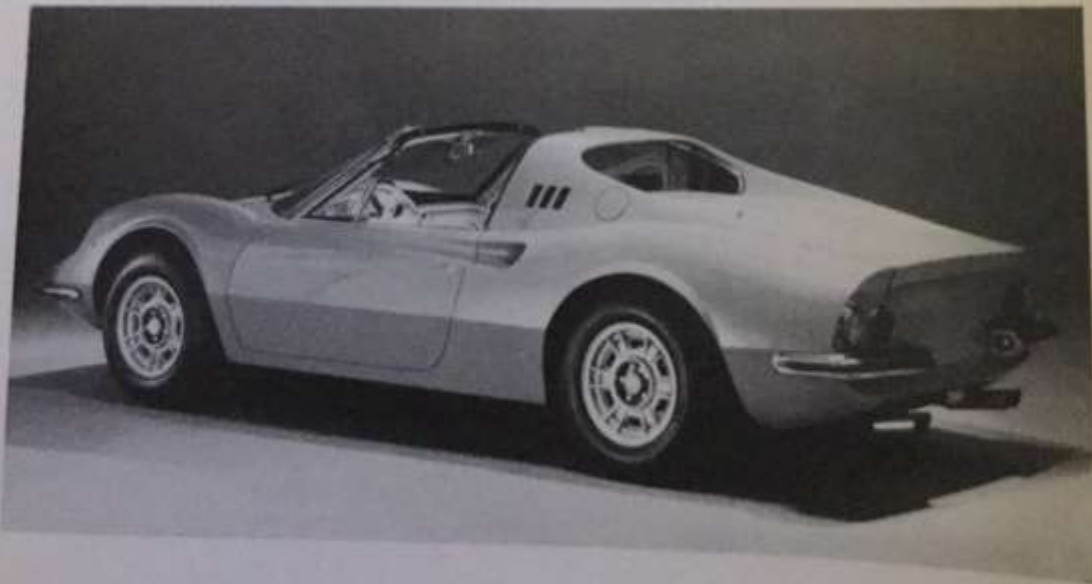
246 GTS DINO SPYDER

2.4 Litre V6 Overhead camshaft engine
195 b.h.p. at 7,600 r.p.m.

Body designed by: PININFARINA
Built by: SCAGLIETTI

Right or left hand drive
Speed: 150 mph
Length: 13' 10"
Width: 5' 7"
Height: 3' 8"
Wheelbase 7' 6"
Front track 4' 8"
Rear track 4' 8"
Dry weight: 21½ cwt.
Capacity of tank: 14½ gallons

Basic Price: £4,638
Purchase Tax: £976.81
Total: £5605.81



SPECIFICATION DETAILS

Model	365 GTB 4	365 GTC 4	246 GT Dino B 246 GTS
ENGINE	<p>60" V12 81mm 71mm 4,300 cc 8.3:1 Soletron alloy 362 B.H.P. at 7,500 r.p.m. B.M.B.</p>	<p>60" V12 81mm 71mm 4,300 cc 8.8:1 Soletron alloy 228 B.H.P. at 6,200 r.p.m.</p>	<p>60" V8 82.5mm 60mm 2,418 cc 9.0:1 Cast iron 195 B.H.P. at 7,600 r.p.m.</p>
GEARBOX	<p>Five forward speeds, all synchromesh with top gear Reverse 1st - 1.2119 / 2nd - 1.3142 / 3rd - 1.1152 / 4th - 1.1173 / 5th - 1.0194</p>	<p>Five forward speeds, all synchromesh and reverse Reverse 1st - 1.2482 / 2nd - 1.1814 / 3rd - 1.1244 / 4th - 1.1 / 5th - 1.0301</p>	<p>Five forward speeds, all synchromesh and reverse Reverse 1st - 1.2073 / 2nd - 1.2119 / 3rd - 1.1514 / 4th - 1.125 / 5th - 1.0522</p>
REAR AXLE RATIOS	2.33 (100/31)	4.17 (111/45)	3.82 (118/31)
CHASSIS	Steel tubular frame. Independent suspension on all four wheels. Koni telescopic shock absorbers all round.	Steel tubular frame. Independent suspension on all four wheels. Koni telescopic shock absorbers all round.	Steel tubular frame. Independent suspension on all four wheels. Koni telescopic shock absorbers all round.
BRAKES	Servo assisted ATE Lockheed ventilated disc brake front and rear.	Servo assisted ATE Lockheed ventilated disc brake front and rear.	Servo assisted ATE Lockheed ventilated disc brake front and rear.
WHEELS	Magnum alloy rims for 215 x 15 tires. Bionics alloy wheels optional.	Magnum alloy rims for 210 x 15 tires. Bionics alloy wheels optional.	Magnum alloy rims for 205 x 14 tires.